

Appendix D: Sanborn Fire Insurance Company Maps

The following maps show changes to the buildings and site of the Bok Kai Temple and surrounding area from 1885 to 1948, as recorded in Sanborn Fire Insurance Company maps for these years. Sanborn maps provide useful information on building size, configuration, construction and use. Updated and revised periodically, the maps can also be used to show changes to a property or area. The first Sanborn map of Marysville was published in April 1885. The copies of the Sanborn maps included here were provided by Dr. Paul G. Chace.

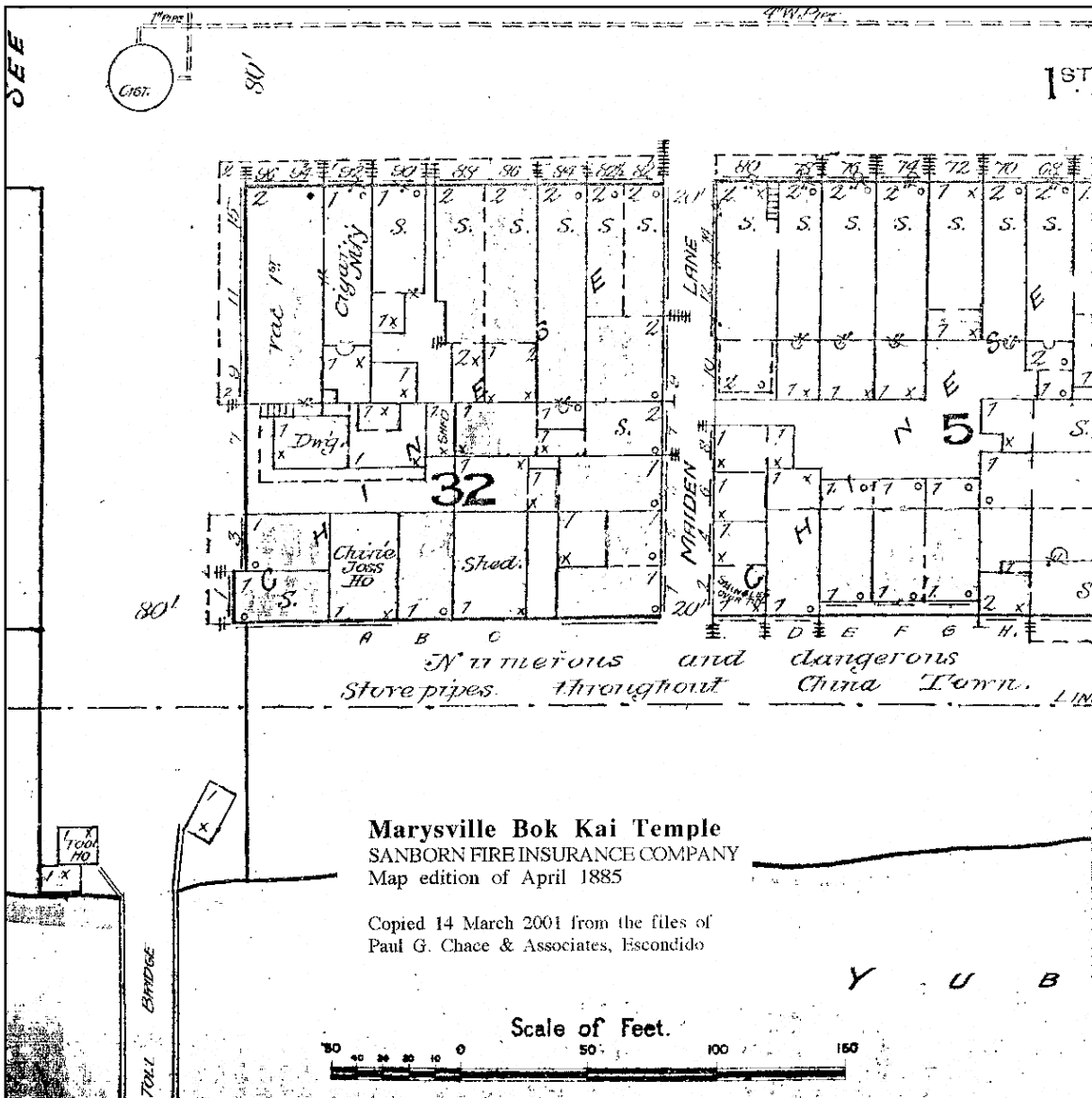


Figure 1. Sanborn Fire Insurance Company map from April 1885 showing the Bok Kai Temple with its present floor plan.

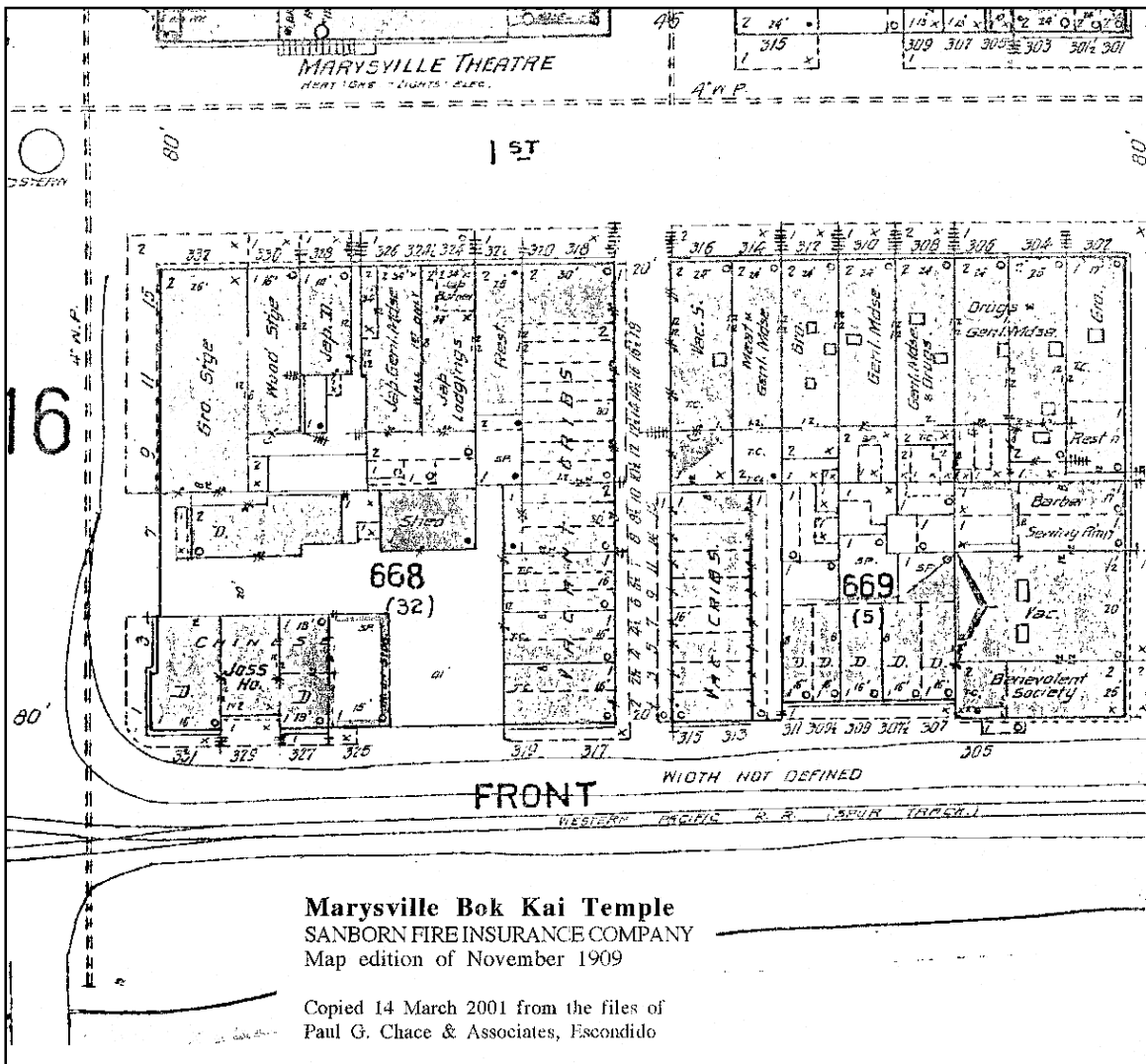


Figure 4. Sanborn Fire Insurance Company map from November 1909 showing the Bok Kai Temple with its present floor plan without the attachment at the northeast corner.

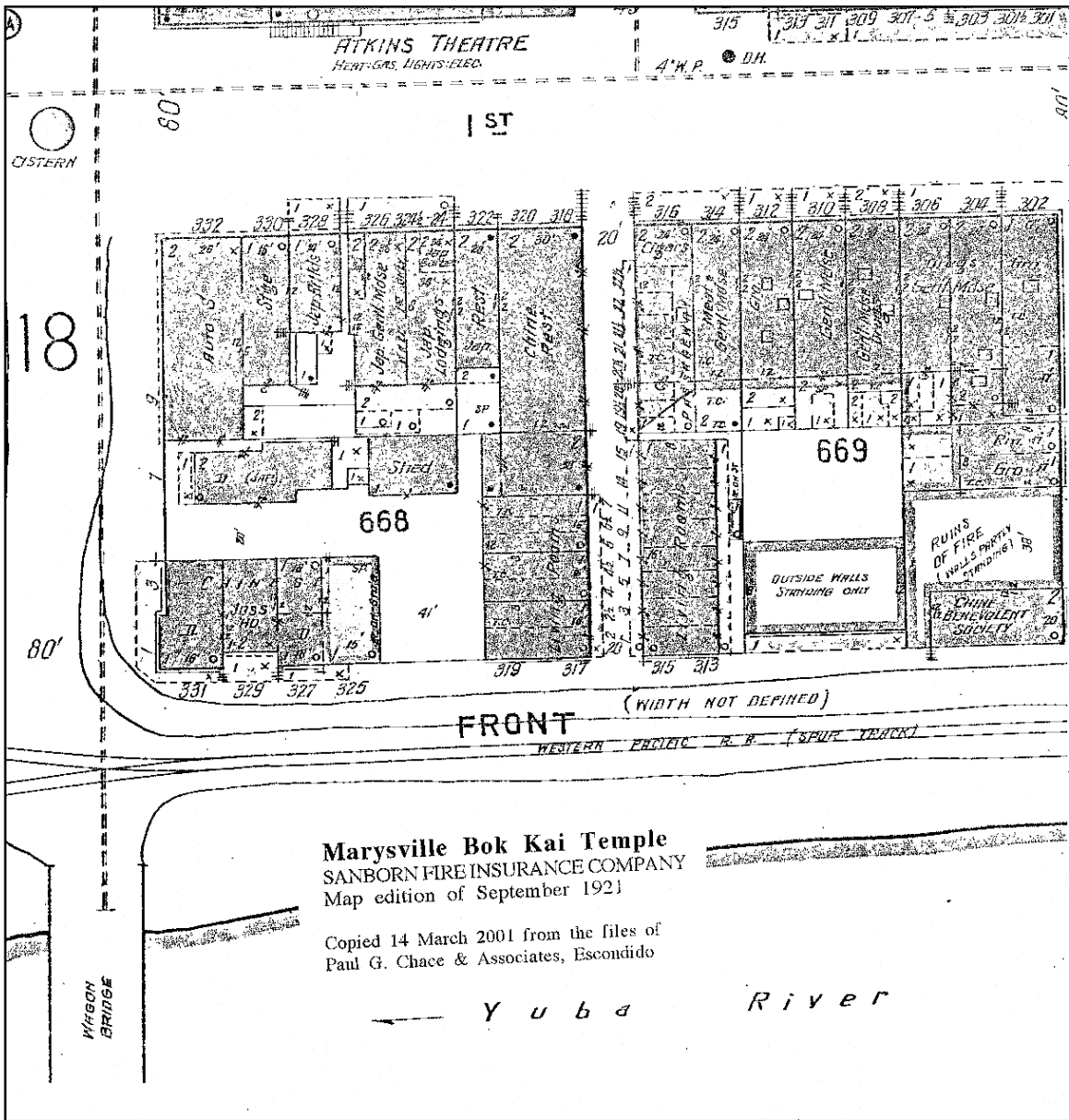


Figure 5. Sanborn Fire Insurance Company map from September 1921 showing the Bok Kai Temple with its present floor plan.

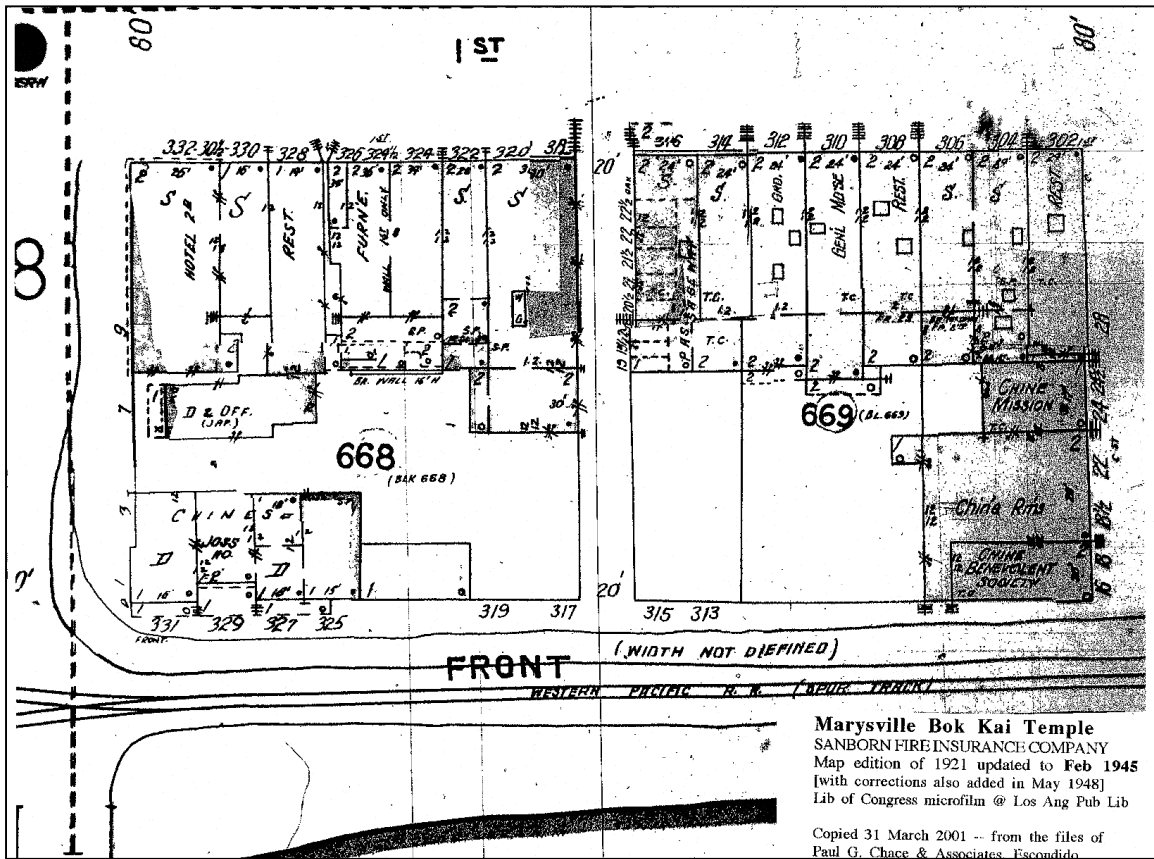


Figure 6. Sanborn Fire Insurance Company map from May 1948 showing the Bok Kai Temple with an addition on the east end of the building.