



ARCHITECTURAL RESOURCES GROUP
Architects, Planners & Construction, Inc.

415-441-6660
415-441-6661
415-441-6662
415-441-6663
415-441-6664
415-441-6665
415-441-6666
415-441-6667
415-441-6668
415-441-6669
415-441-6670
415-441-6671
415-441-6672
415-441-6673
415-441-6674
415-441-6675
415-441-6676
415-441-6677
415-441-6678
415-441-6679
415-441-6680
415-441-6681
415-441-6682
415-441-6683
415-441-6684
415-441-6685
415-441-6686
415-441-6687
415-441-6688
415-441-6689
415-441-6690
415-441-6691
415-441-6692
415-441-6693
415-441-6694
415-441-6695
415-441-6696
415-441-6697
415-441-6698
415-441-6699
415-441-6700

NO.	DESCRIPTION	DATE
REVISIONS		

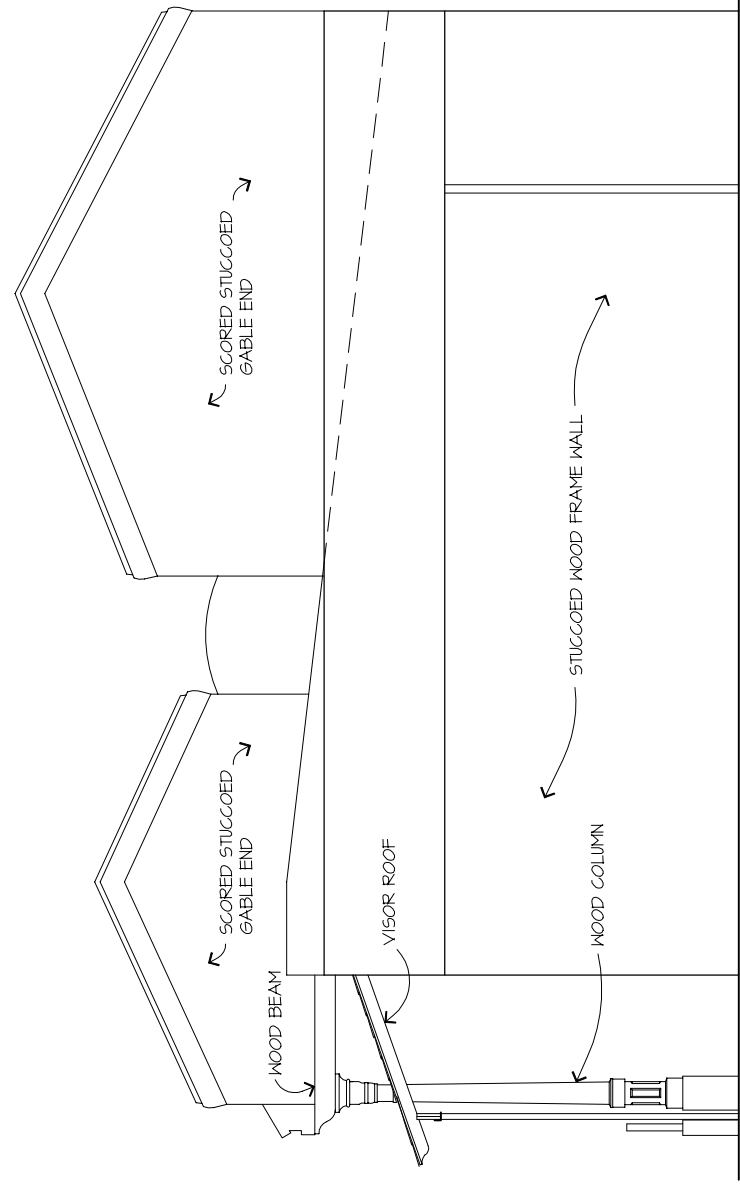
BOK KAI TEMPLE
MARYSVILLE CALIFORNIA
HISTORIC STRUCTURE REPORT

SHEET TITLE
WEST AND EAST ELEVATIONS / BUILDING SECTION

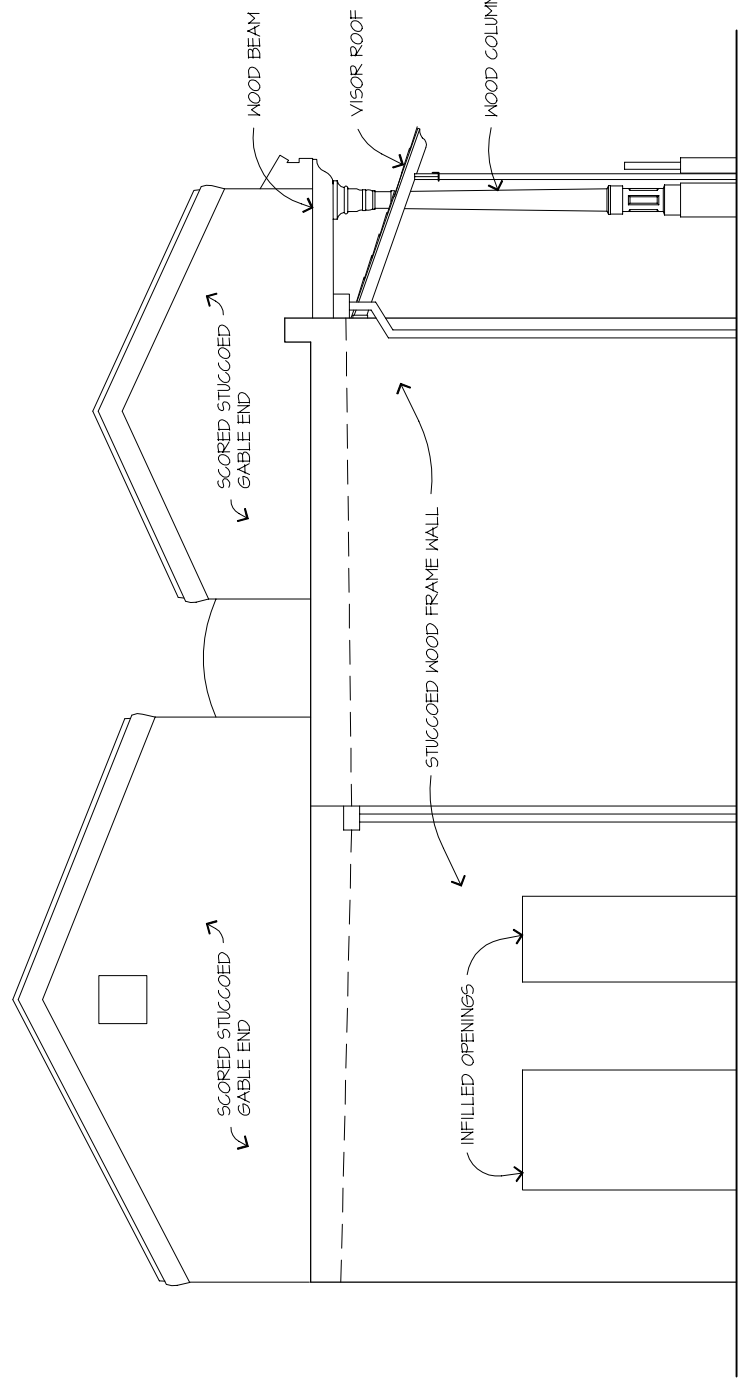
ISSUANCE
EXISTING CONDITIONS
DATE
SEPTEMBER 12, 2002

PROJ. NO.	02000
DRAWN	ZY
CHECKED	EK

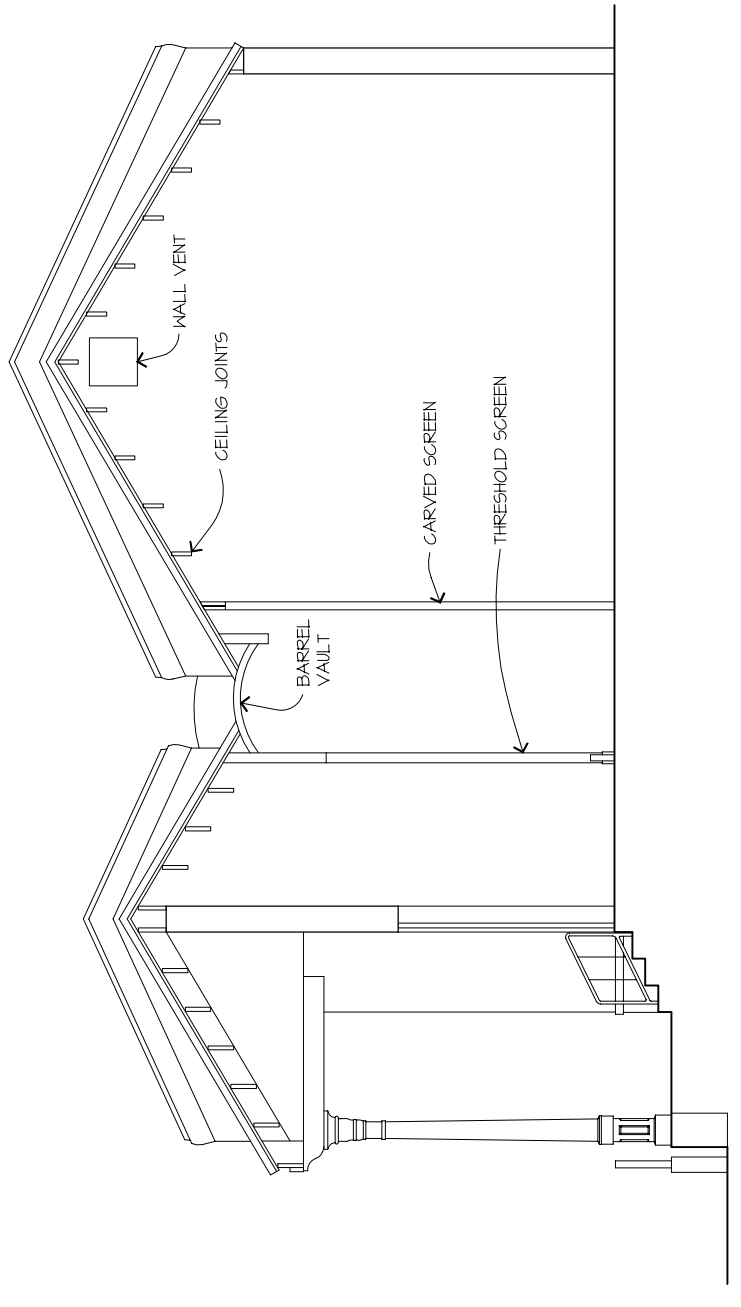
DRAWING NO.
E3.2
SHEET 6 OF 7



2 EAST ELEVATION
1/8" = 1'-0"



1 WEST ELEVATION
1/8" = 1'-0"



3 BUILDING SECTION
1/8" = 1'-0"