



ARCHITECTURAL RESOURCES GROUP
Architects, Planners & Constructors, Inc.

Five 9, The Embarcadero • San Francisco, California
415-441-6660

NO.	DESCRIPTION	DATE
REVISIONS		

BOK KAI TEMPLE

MARYSVILLE
CALIFORNIA

HISTORIC
STRUCTURE
REPORT

SHEET TITLE
**PARTIAL
ELEVATIONS**

ISSUANCE
EXISTING CONDITIONS

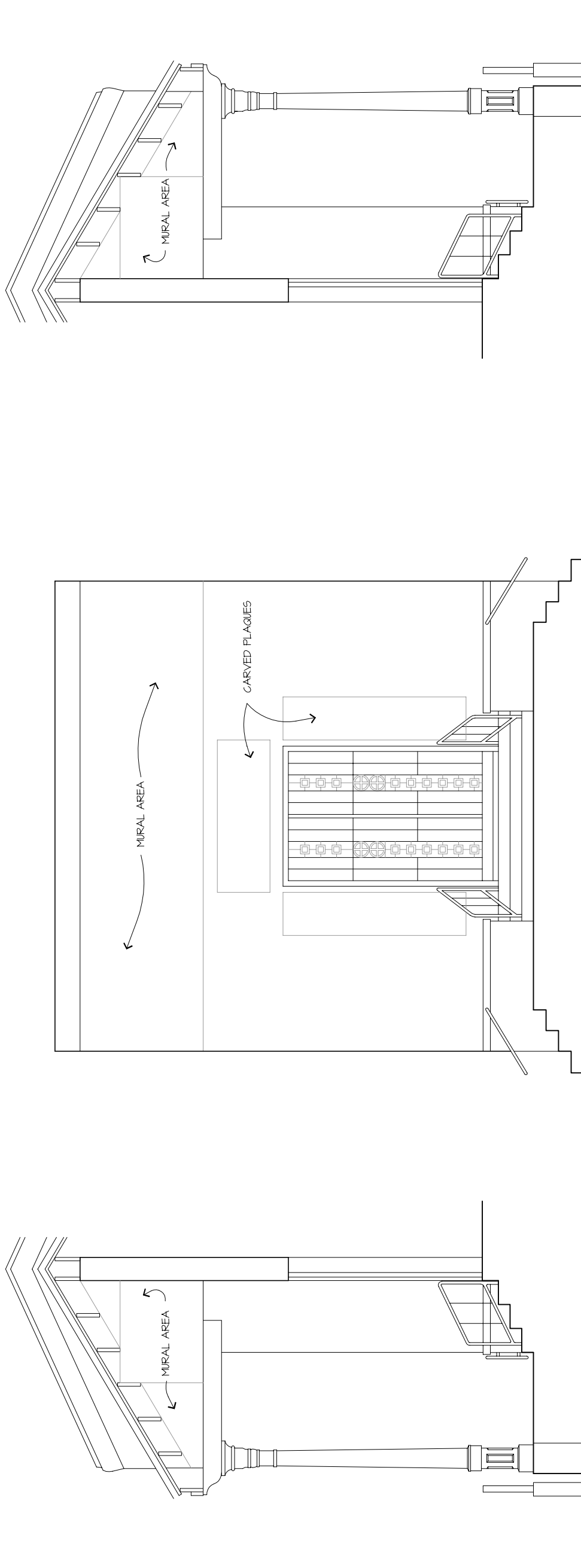
DATE
SEPTEMBER 12, 2002

PROJ. NO. 02000
DRAWN ZY
CHECKED EK

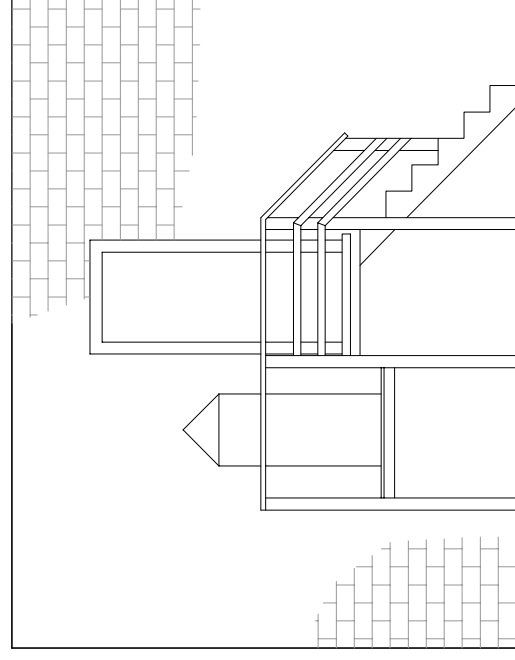
DRAWING NO.

E3.3

SHEET 1 OF 1



① ELEVATIONS AT PORCH AREA
3/16" = 1'-0"



② INTERIOR ELEVATION AT FORTUNE READER'S CHAMBER
3/16" = 1'-0"