



ARCHITECTURAL RESOURCES GROUP
Architects, Planners & Constructors, Inc.

FIG. 9, The Embarcadero - San Francisco, California
415-441-2680 fax 415-441-0277

TR Tuan & Robinson
Structural Engineers, Inc.
221 Main Street, Suite 545
San Francisco, California 94105
TEL 415 957 2480 FAX 415 957 2483

NO.	DESCRIPTION	DATE
REVISIONS		

BOK KAI TEMPLE

TEMPORARY STABILIZATION

MARYSVILLE CALIFORNIA

SHEET TITLE
ELEVATIONS

ISSUANCE
PERMIT SET
DATE
04-30-2002

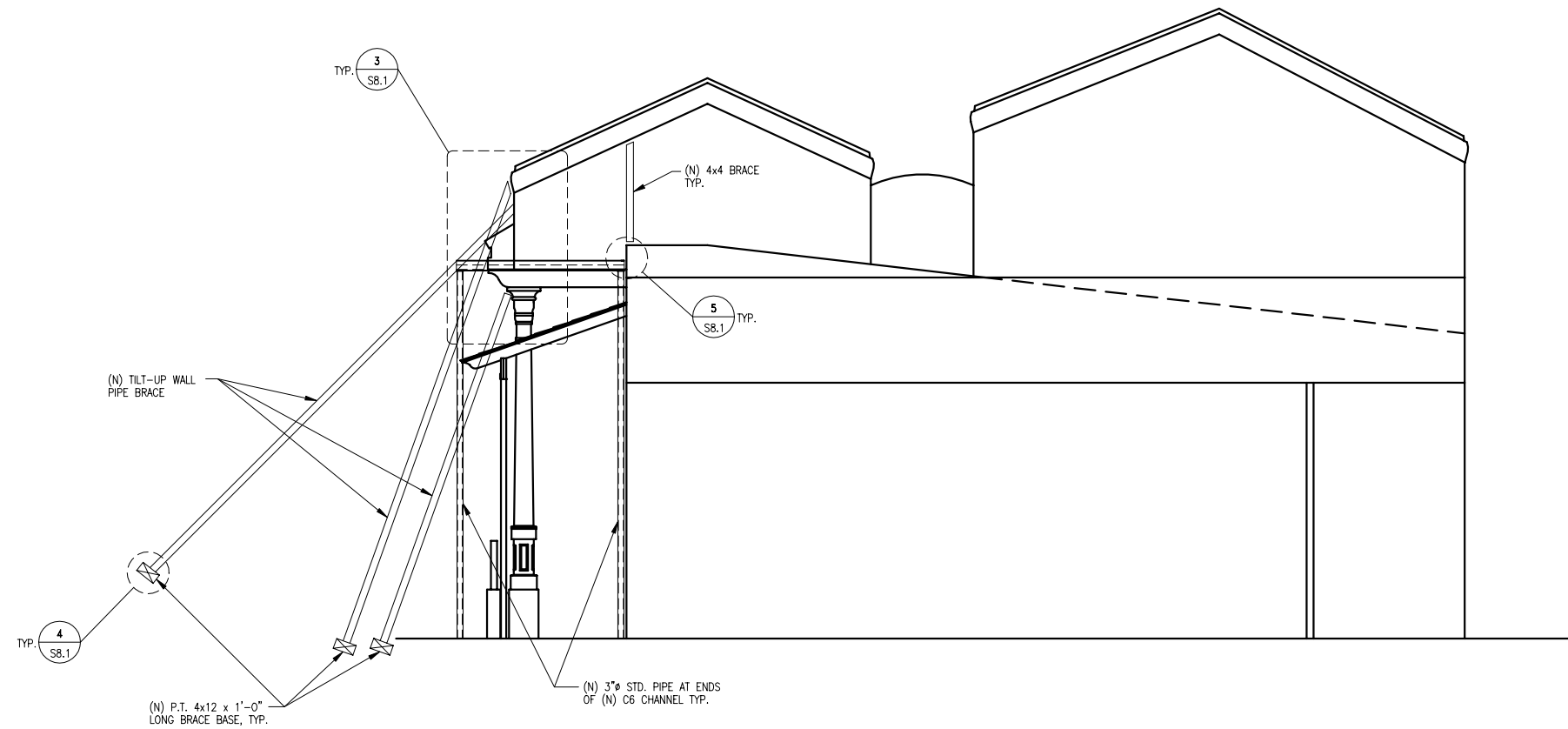
PROJ. NO.
02000
DRAWN
TT
CHECKED
ET



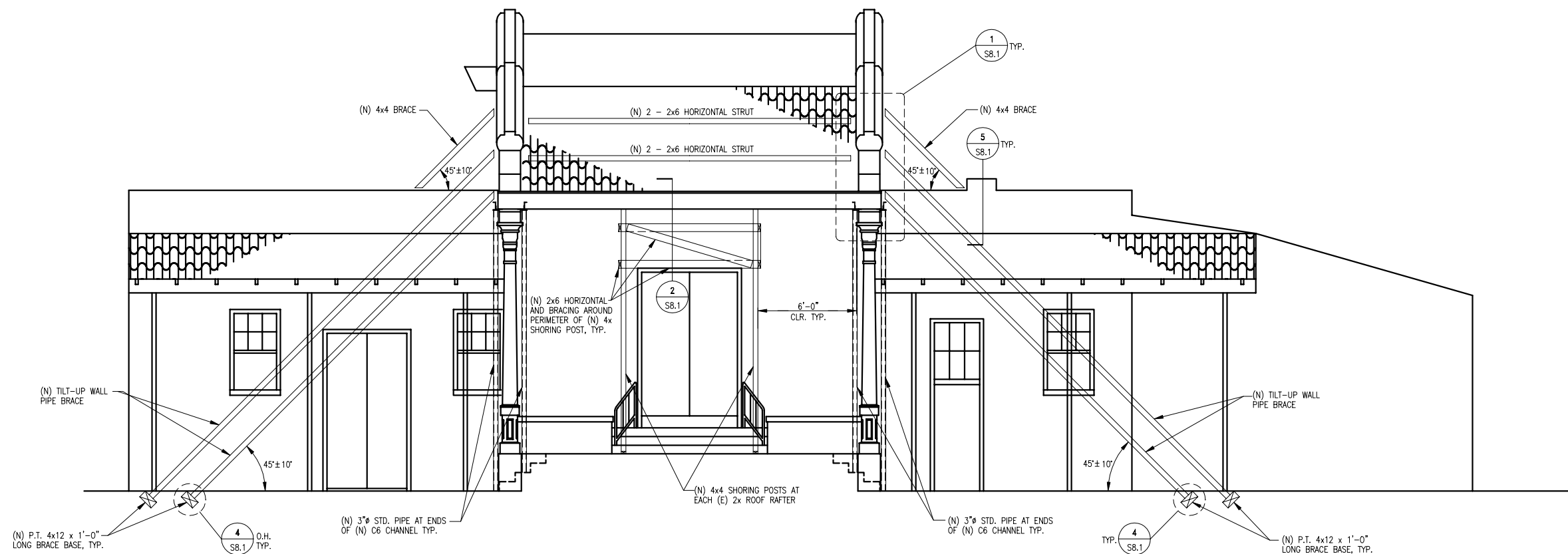
DRAWING NO.

S3.1

SHEET OF 00



2 EAST ELEVATION
1/4" = 1'-0"



1 SOUTH ELEVATION
1/4" = 1'-0"

© ARCHITECTURAL RESOURCES GROUP